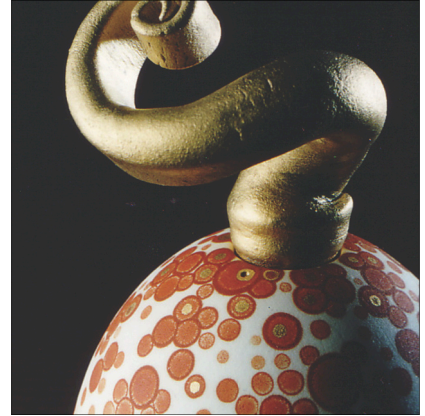




# ALL ABOUT MOULDS with Gabriella Kuzsel

Learn the process of design, creating original models from plaster and making single and multi part moulds ready for slip casting or press moulding.





Gabriella Kuzsel is a ceramist and teacher specialising in modeling, mouldmaking and slip casting porcelain. She works for commission, designing moulds and finished works for individuals and production while producing her own distinctive pieces for exhibition.

She was ceramic design lecturer in the University of West Hungary and has taught courses in many international universities including Glasgow School of Art, Kansas City Art Institute, Ohio University, University of Central Lancashire, Rhode Island College and many more.

Gabi will demonstrate and instruct at this practical hands-on workshop. Participants will be introduced to different types of moulds and ways of mixing plaster. You will learn how to design and make a model from plaster, how to make single and multi part moulds for either slip casting or press moulding.

Everyone will work on their own project and have the opportunity to learn from each other's experiences. Health and Safety working with plaster will be discussed along with best practices on how to use the material in your clay studio.

Participants can bring an object / model to cast, or for example a piece of fruit / vegetable, or drawings to work from to carve a model. Please come prepared with ideas and sketches for what you plan to make during the course. Gabi will then advise on the most appropriate ways to achieve your idea. You can also bring the actual object if you have already made it. With everyone working on their own ideas then you will all learn from each other so bring your drawings and sketches and Gabi will guide you through the process.

## 5 DAY INTENSIVE MOULDMAKING COURSE

### PROVISIONAL SCHEDULE

Teaching times are from 10.00 - 13.00 and 14.00 - 17.00 daily.  
There may be need to change these as work develops during the course.

Monday	Arrive at Studio. Check into your rooms.
Tuesday	DAY 1 Demonstrations by Gabriella Kuzsel - Different model and mouldmaking techniques. Discuss your ideas and mould methods. Evening presentation by Gabriella Kuzsel.
Wednesday	DAY 2 Object design, models and moulds, Studio work. Individual teaching with Gabi.
Thursday	DAY 3 Mouldmaking. Studio work. Individual teaching with Gabi.
Friday	DAY 4 Mouldmaking. Studio work. Individual teaching with Gabi.
Saturday	DAY 5 Slipcasting. Studio work. Individual teaching with Gabi.
Sunday	Leave

Evening working – The studios will be available if you wish to continue making items, though these sessions will not be taught. Additional materials to those provided by the course may be purchased from the technicians.

The tutor instructs students in health and safety issues relevant to this course. Students may work unsupervised on agreed projects once they have satisfied the tutor as to their competence. There may be restrictions on the equipment available to students in the tutor's absence.

## WHAT YOU SHOULD BRING WITH YOU

- You should bring your small personal hand tools. Remember to pack them in your stowed luggage not in hand luggage for flying.
- Notebook, or sketch pad and pencil.
- Overall/apron.
- Closed shoes for wearing in the plaster room.

## BASIC TOOLKIT

This is a suggestion for a basic mouldmaker's toolkit. These are the main tools Gabi uses. If you have (or can get) some or all of the tools shown it would be good. If not then there will be some available to buy and some to share.

## SHAPING TOOLS



- Facemask against dust.
- Stanley surform. I use straight, curved and tubular ones.
- Hacksaw blades.
- Sanding screens - usually for plasterboard. Different grades can be bought (fine, rough etc.)
- Carborundum sponge - two layers of carborundum on either side of a thin sponge. Different grades can be bought (fine, rough etc.)

These can be bought from any good hardware store or you can buy online.

## CARVING TOOLS



- Serrated carving tools.
- Ink pencil.
- Chisels - curved, thin and wide flat blade.
- Strong, straight blade knife - (Tesco).
- Spatula and needle tools for fine work.
- Longer non flexible metal scraper.
- Flexible straight metal kidney.
- Flexible serrated and plain kidneys.

## SLIP CASTING TOOLS



- Small natural sponges
- Straight blade porcelain knife
- Brushes - small and larger, soft bristles.
- Wooden modelling tools